

ON THE CUTTING EDGE

Established in 1992, the **EASI System** is essentially an Americanized version of the European 32MM cabinet system. We offer a variable point-to-point “frameless” system using 32MM hardware that makes the most efficient use of space possible.

At Euro Assembly Systems, Inc. our mission has always been to do a better job producing the finest quality cabinet components. Built upon more than 15 years of cabinetry experience and in-depth understanding of the industry, we at **EASI** recognize how cabinet shops, small or large, can benefit from outsourcing cabinet case components.

We Make It EASI For You.

What are the incurred benefits from outsourcing?

- Frees up key employees to produce higher dollar custom work as well as lets you make a profit on components while doing other work
- Allows for more time to be dedicated to marketing and company growth
- Offers better control over product costs
- Knowing your exact costs means you'll know your exact profit
- Time is not wasted on cut lists, the ordering or unloading of raw materials, training costs or on unproductive labor
- Saves on labor costs associated with cleaning shop and on dump fees
- Less overhead means less shop space is required
- Avoids exorbitant capital investments on machinery and the regular costs of maintaining an inventory

What's Our Angle?

A special feature of our system is you order just the way you design, without hundreds of complicated codes and confusing upcharges associated with modifying standard sizes and colors.

In addition, we utilize JIT manufacturing. That is to say, no raw materials on our

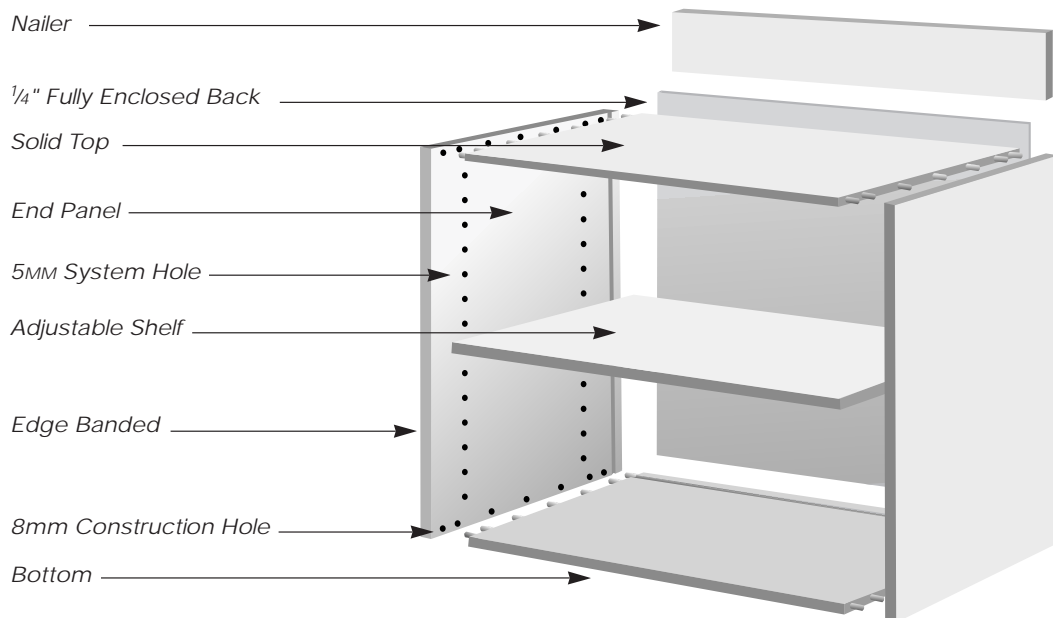
(continued)

premises sit idly by, pre-cut or partially assembled. This assures you that your order will be fabricated specifically to your variable requirements. We also believe quality hinges on satisfaction and accurate sizing. That's why we guarantee all parts accurate within 1/16" in size and alignment. This allows **EASI** to provide "custom" components like no one else, placing us a custom cut ahead of the rest.

Ordering on the Web is now available, enabling us to offer next-day quotes. You simply fill out the step-by-step order form, send it to us via the Web and you will receive a quote by the following day.

With simplified ordering, superior quality and outstanding customer service, choosing Euro Assembly Systems, Inc. for your company's outsourcing needs is as **EASI** as it is smart.

Euro-style (frameless) Cabinet Component Diagram



STANDARD FEATURES

Standard Features Included with the EASI System:

- Four base heights
- Variable width
- Variable depth in ½" increments
- Variable Wall, Pantry, Oven cabinet heights
- Edge banding to match popular standard colors and wood veneers
- Variable mid-drawer heights
- Horizontal and vertical partitions placed at your locations
- Dowels inserted in case and drawer parts
- Cabinets available for use with Accuride 3832 full extension drawer guides
- Drawer box fronts predrilled for drawer front adjusters
- Keku clips for false fronts, tray dividers, file hangers, pullout screws, spacers and bumpers are all included with your order
- Bread board configurations provided
- Prices are based on the average kitchen configuration priced by the lineal ft. and sq. ft.
- Cabinet cases are manufactured from ¾" white Melamine with ⅝" white Melamine drawer sides and ¼" cabinet backs and drawer bottoms

Special items including finished ends, panels, finished interiors, pullouts and custom depths and heights are available for a charge. See PRICING CHARTS for a list.

IMPORTANT ITEMS

Confirmation of your order comes complete with cabinet elevations and a cabinet report listing the size of every cabinet. Orders will be constructed and invoiced according to approved cabinet elevations and cabinet report. You can easily and quickly see that each cabinet is precisely what you ordered. You will also receive a list of door and drawer front sizes with the confirmation making ordering fast and EASI. Taxes, shipping and handling priced separately.

If there are any changes please let us know as soon as possible. Typically, your order confirmation will be sent within three days after receipt. Production can begin anytime after the confirmation is sent. Due to the computer work involved, a charge will be assessed for any changes and cancellations after the confirmation has been sent.

Corner and L-shaped cabinet doors are sized for square edges with cabinets on both sides. For profiled doors, we strongly suggest you do a mock-up for this and all applications.

Angle and L-shaped cabinet prices: For example, the KBL is 36" x 36"-24" deep is priced as 36" along one wall and 12" along the adjoining wall for a total of 48".

Single doors are 4MM less in width than cabinet width. A pair of doors measure 8MM less than the cabinet width, divided by two. Door and drawer faces overlap vertical and horizontal partitions by 7.5MM ($19/64$ ").

Pencil Drawers(PD) are installed flush with the top of the 16MM spacer strip placed on top of the cabinets.

Return panel sizes: You may order any return panel size. The standard base return panel is 698MM ($27\frac{1}{2}$ "). The standard wall return panel is 368MM ($14\frac{1}{2}$ ").

FRACTION TO DECIMAL CONVERSION TABLE

$1/16$ 0.063	$3/8$0.375	$11/16$0.688
$1/8$0.125	$7/16$0.438	$3/4$0.750
$3/16$0.189	$1/2$0.500	$13/16$0.813
$1/4$0.250	$9/16$0.563	$7/8$0.875
$5/16$0.313	$5/8$0.625	$15/16$0.938

ORDER FORM INSTRUCTIONS

1. Enter all company information carefully and completely.
2. Specify what kind of Edge Banding and Exterior Material you require. Some examples are White Melamine, Maple, Red Oak, White Oak, VG Fir, Match Formica #857 and Cherry. If your order consists of more than one type of wood or laminate, please use a different order form per material. Please use the same job name and date on each order form.
3. Please enter all dimensions in inches, and enter fractions as decimals. For example: to enter 12 $\frac{1}{4}$ ", enter 12.25". If ordering an angle or "L" cabinet and a second width needs to be specified, place an "x" between the first width entry and the second width entry. For example: 36" x 36". Refer to our decimal conversion page for help.

4. Explanation of Column Heads:

EASI #: This number will be issued by us to link your line item to the cabinet number assigned by our computer.

QUANTITY: Indicate the quantity desired of the specific line item.

CABINET TYPE: Indicate which cabinet type you require. Please use the abbreviated cabinet name (i.e. "KBDD" for Kitchen Base Drawer Door) found in the catalog.

WIDTH: Specify the width of the cabinet in inches with fractional lengths as decimals. For example: 24 $\frac{1}{4}$ " = 24.25". If ordering an angle or "L" cabinet and a second width needs to be specified, place an "x" between the first width entry and the second width entry. For example: 36" x 36".

HEIGHT: Enter height specifications for the Wall & Tall cabinet series only. Base cabinet heights are fixed and therefore you may leave this box blank. Cabinet heights for the Wall, Oven and Pantry cabinets are available in 32mm increments. Refer to the System Increments chart for quick reference.

DEPTH: This is the depth of the cabinet measured from the front to the back of the cabinet. The standard Base cabinet depth is 24" and the Wall cabinet standard is 12". Remember to enter fractional measurements as decimals.

(continued)

FINISHED ENDS LEFT/RIGHT: Finished Ends refer to the exposed sides of a cabinet. They will be made with the Exterior Material you specify on the order form. As you stand and face the cabinet, the left side is on your left and right is on your right. Therefore, a check mark in the “Left” column means that the left end of the cabinet will be finished, and likewise for the “Right” column.

HINGE LEFT, RIGHT or PAIR: Indicate where the hinge should be located. Only enter one of the choices. “L” means that the hinge will be located on the left side of the cabinet doors. “R” means that the hinge will be located on the right side of the cabinet. “P” indicates a pair of doors is required for the cabinet.

DRAWER OPTIONS: Enter your choices for desired drawer type(s). Separate types by a comma. To indicate the number of drawers in the bank, list **4DRW**, **3DRW** or **2DRW**. List **1TD** or **2TD** for the number of Top Drawers. Use **1PO**, **2PO**, **3PO** or **4PO** for the number of Pullouts, and **1ED** or **2ED** for the number of Extra Drawers required. For example, to order a 4-drawer bank with two top drawers, list “**2TD, 3DRW.**”

SPECIAL INSTRUCTIONS: The top drawer is always fixed in height, but you may enter custom heights for the lower drawers here. Note any additional information required to construct the cabinets to your specifications. Some examples are: “Bread Board”, “Refer to sketch that I am faxing,” or other special requests.

PRICE CATEGORY: Enter 1, 2, 3, 4, or 5 as noted next to each cabinet in the catalog. These prices reflect our standard, inclusive features. Additional services and options are extra. Refer the the catalog for pricing charts.

Refer to the sample below. List any miscellaneous items following your cabinet order.

EASI #	QTY	CABINET TYPE	WIDTH	HEIGHT	DEPTH	FIN. ENDS L R	HINGE L, R, P	DRAWER OPTIONS	SPECIAL INSTRUCTIONS	PRICE CAT.	
	1	P	24"	46"	24"	✓✓	L	1PO	FIXED SHELF @ 65"	5	
	2	KBD	18"	—	22.5		R		BREAD BOARD	1	
	3	KBD	18"	—	22.5		L			1	
	4	2 KBDB	16.25	—	24"			4DRW		3	
	5	4 8' TOE KICK COVERS								PAINT GRADE	
	6	1 6" x 36" FILLER									
	7										

SYSTEM INCREMENTS

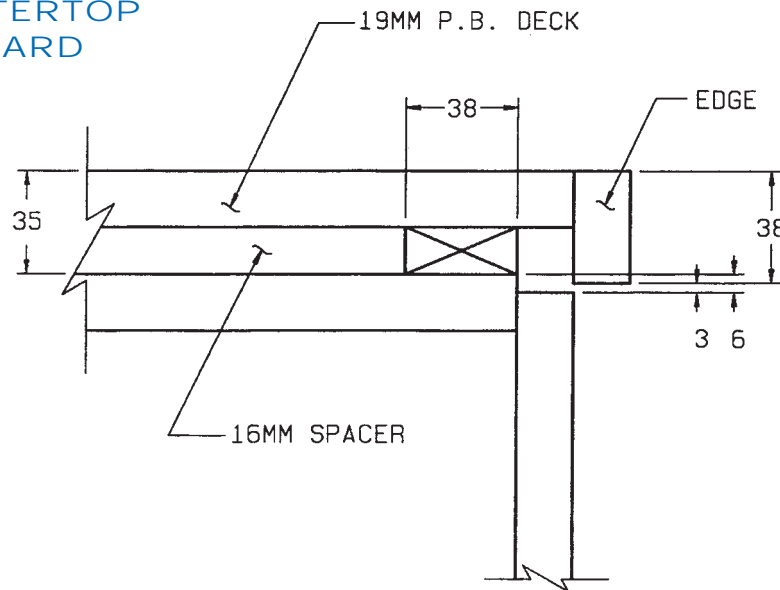
Metric conversion: 25.4MM = 1"

Use the following chart as a quick reference for 32MM increment conversions and their decimal equivalents (especially useful for designating heights for the Tall Cabinets).

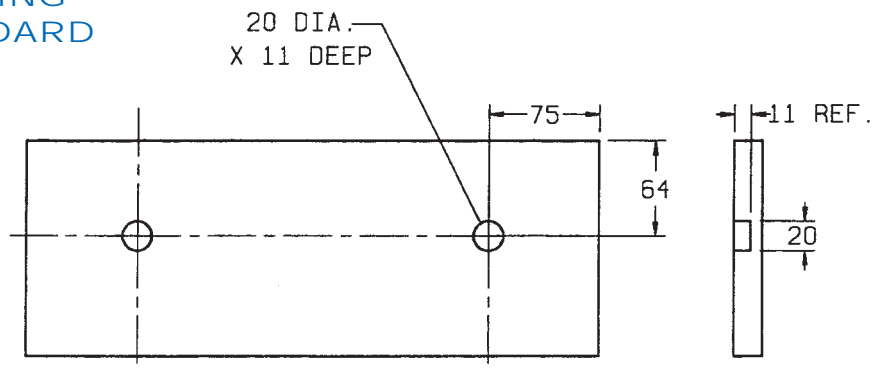
MM	INCH	DECIMAL	MM	INCH	DECIMAL
32	1 1/4	1.260	1248	49 1/8	49.134
64	2 1/2	2.520	1280	50 3/8	50.394
96	3 3/4	3.780	1312	51 5/8	51.654
128	5 1/16	5.039	1344	52 15/16	52.913
160	6 5/16	6.299	1376	54 3/16	54.173
192	7 9/16	7.559	1408	55 7/16	55.433
224	8 13/16	8.819	1440	56 11/16	56.693
256	10 1/16	10.079	1472	57 15/16	57.953
288	11 5/16	11.339	1504	59 3/16	59.213
320	12 5/8	12.598	1536	60 1/2	60.472
352	13 7/8	13.858	1568	61 3/4	61.732
384	15 1/8	15.118	1600	63	62.992
416	16 3/8	16.378	1632	64 1/4	64.252
448	17 5/8	17.638	1664	65 1/2	65.512
480	18 7/8	18.898	1696	66 3/4	66.772
512	20 3/16	20.157	1728	68 1/16	68.031
544	21 7/16	21.417	1760	69 5/16	69.291
576	22 11/16	22.677	1792	70 9/16	70.551
608	23 15/16	23.937	1824	71 13/16	71.811
640	25 3/16	25.197	1856	73 1/16	73.071
672	26 7/16	26.457	1888	74 5/16	74.331
704	27 11/16	27.717	1920	75 9/16	75.591
736	29	28.976	1952	76 7/8	76.850
768	30 1/4	30.236	1984	78 1/8	78.110
800	31 1/2	31.496	2016	79 3/8	79.370
832	32 3/4	32.756	2048	80 5/8	80.630
864	34	34.016	2080	81 7/8	81.890
896	35 1/4	35.276	2112	83 1/8	83.150
928	36 9/16	36.535	2144	84 7/16	84.409
960	37 13/16	37.795	2176	85 11/16	85.669
992	39 1/16	39.055	2208	86 15/16	86.929
1024	40 5/16	40.315	2240	88 3/16	88.189
1056	41 9/16	41.575	2272	89 7/16	89.449
1088	42 13/16	42.835	2304	90 11/16	90.709
1120	44 1/8	44.094	2336	91 15/16	91.969
1152	45 3/8	45.354	2368	93 1/4	93.228
1184	46 5/8	46.614	2400	94 1/2	94.488
1216	47 7/8	47.874	2432	95 3/4	95.748

STANDARD SPECIFICATIONS

COUNTERTOP STANDARD



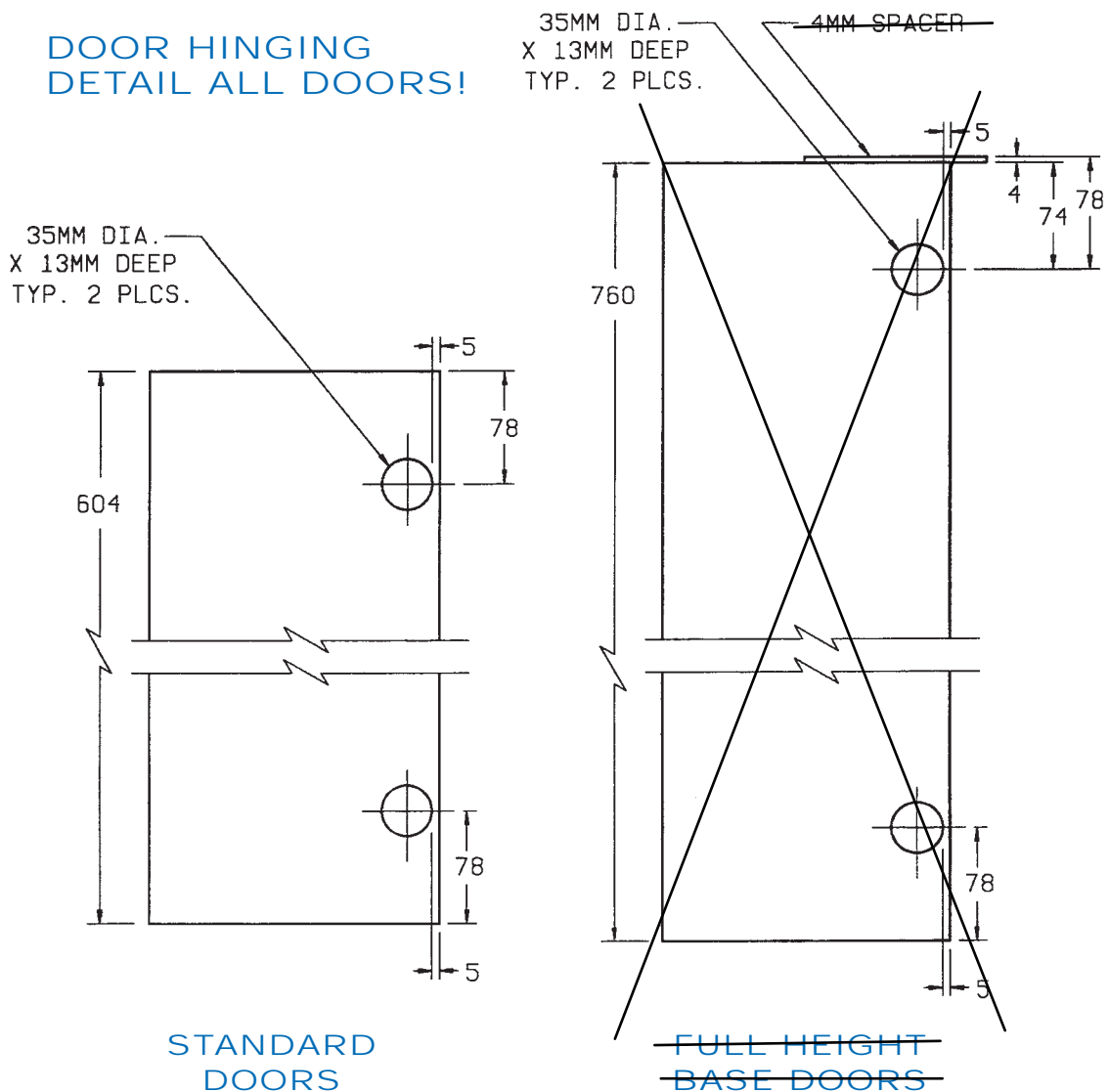
DRAWER FACE DRILLING STANDARD



(BLUM INSERT 295.1000 WITH 8-32 X 1" SCREW)

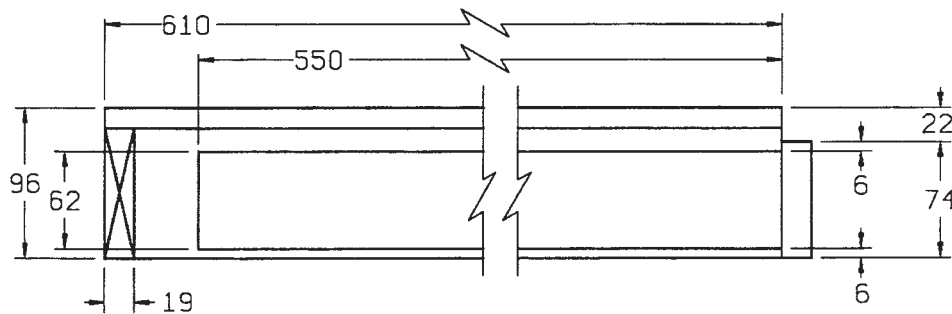
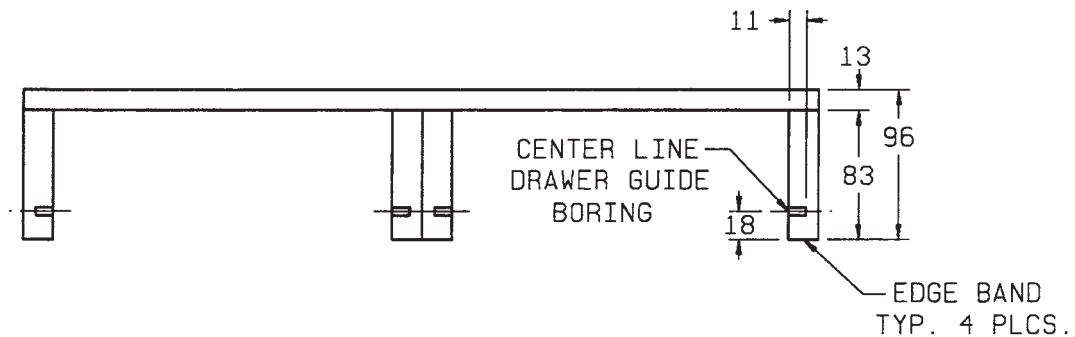
STANDARD SPECIFICATIONS

DOOR HINGING DETAIL ALL DOORS!



STANDARD SPECIFICATIONS

PENCIL DRAWER (PD)



(DOUBLE SHOWN)

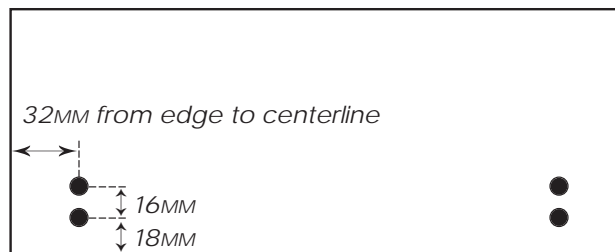
TIP-OUT & FALSE FRONT INSTALLATION INSTRUCTIONS

Tip-out Hinge Standard

The bottom of the hinge is 2mm above the stretcher and flush to the face of the cabinet. The bottom of the hinge will measure 148MM (5¹³/₁₆") from the top of the cabinet.

Tip-out Installation

Drill the pilot holes with their centerline measuring 32MM (1¹/₄") from the side of the panel. Drill the lower holes 18MM from the edge. Allow 16MM between centers. Refer to diagram.



False Front Installation

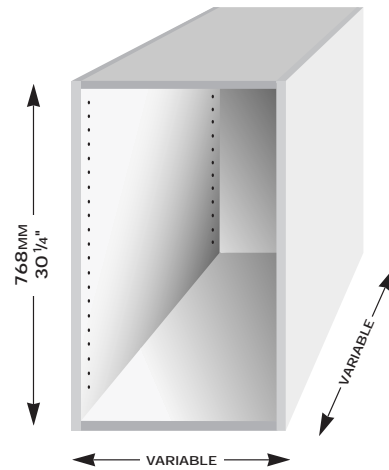
Cabinets are drilled to accept Hafele KEKU clips #262.50.322 for false front application. The false front location for full overlay application is center for height and 32mm from the side.

KITCHEN BASE DOOR

CABINET TYPE: KBD

OPTIONS: Return panel left or right
1 to 4 pullouts

PRICE CATEGORY: 1



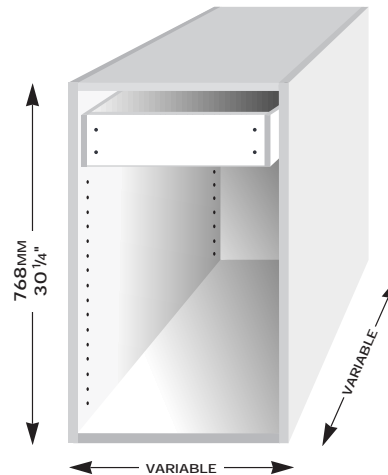
KITCHEN BASE DRAWER DOOR

CABINET TYPE: KBDD

OPTIONS: Return panel left or right
1 or 2 top drawers
1 or 2 pullouts

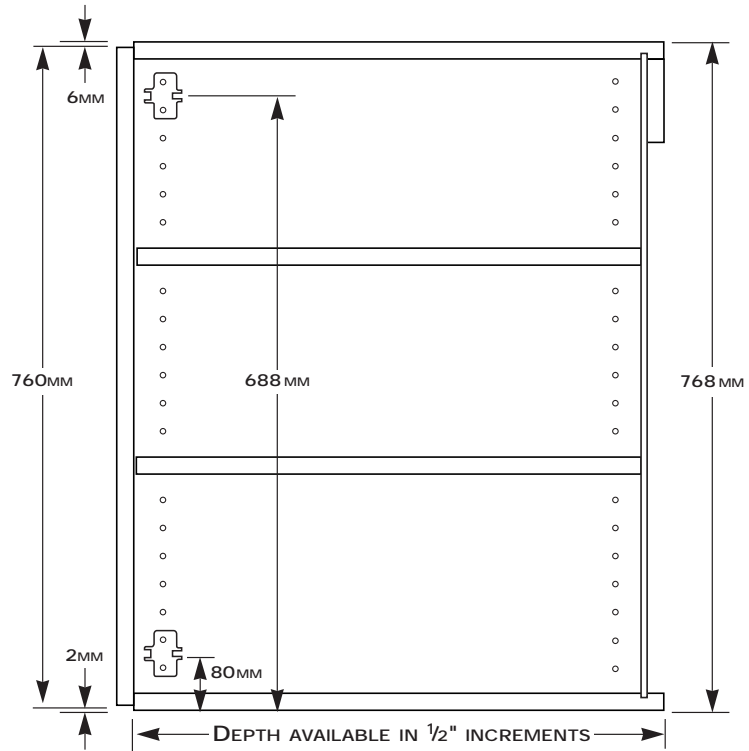
DRAWER HEIGHT: Fixed 152MM (6")

PRICE CATEGORY: 2

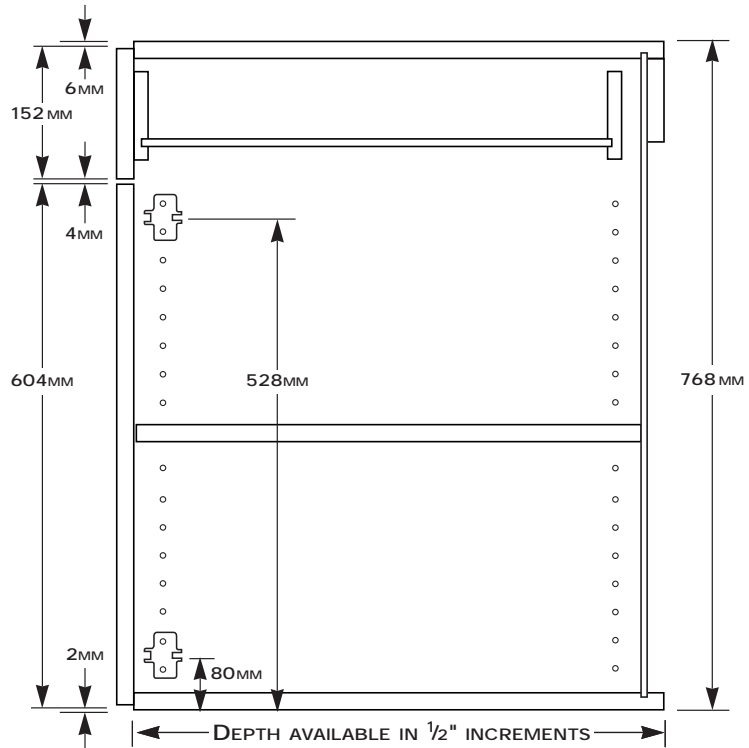


(Technical drawings on reverse)

KITCHEN BASE DOOR (KBD)



KITCHEN BASE DRAWER DOOR (KBDD)



KITCHEN BASE DRAWER BANK

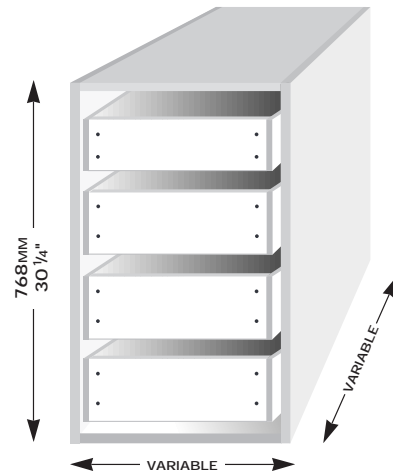
CABINET TYPE: KBDB

OPTIONS: 3 or 4-drawer bank
1 or 2 top drawers
Lower drawers variable height

STANDARD 4-DRAWER BANK:

Top drawer fixed at 152MM (6"),
others at 199MM (7 7/8")

PRICE CATEGORY: 3

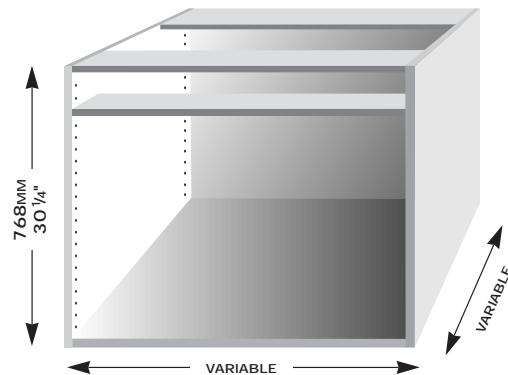


KITCHEN BASE SINK/COOKTOP

CABINET TYPE: KBSC

OPTIONS: Return panel left or right

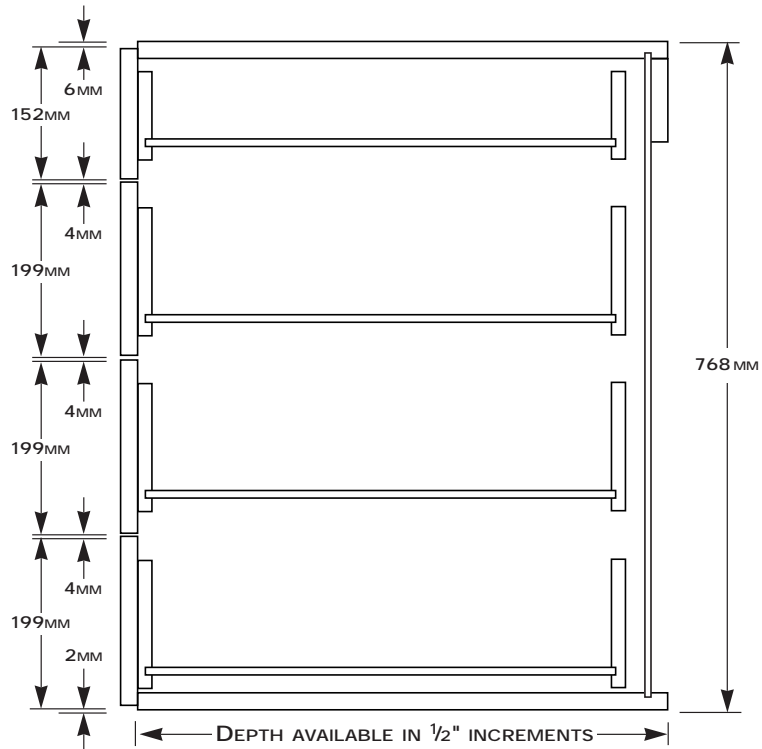
PRICE CATEGORY: 1



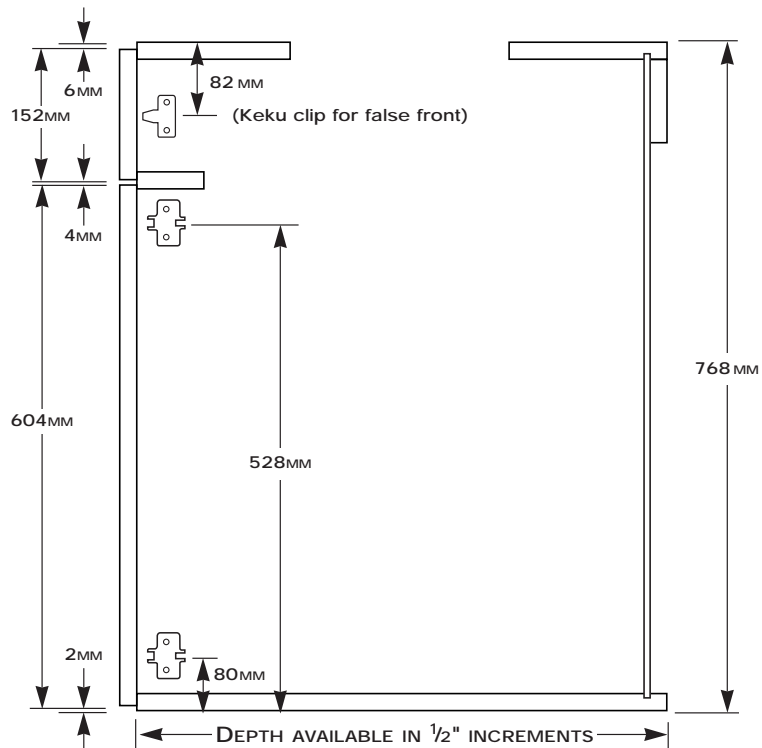
(Technical drawings on reverse)

KITCHEN BASE DRAWER BANK (KBDB)

Standard
4-drawer bank
shown here.
3-drawer bank
also available
with variable
mid-drawer
sizes.



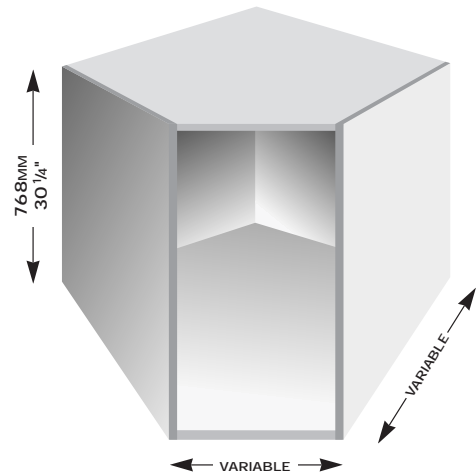
KITCHEN BASE SINK/ COOKTOP (KBSC)



KITCHEN BASE ANGLE

CABINET TYPE: KBA

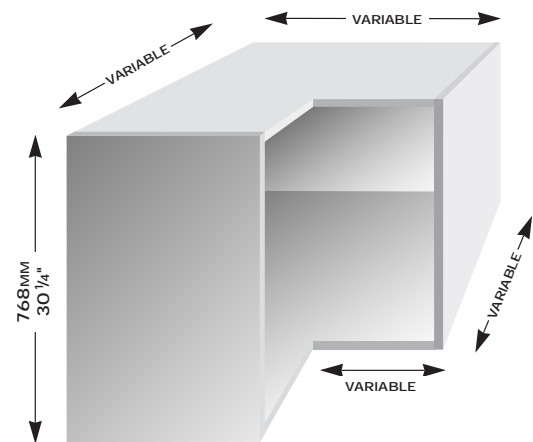
PRICE CATEGORY: 2



KITCHEN BASE L-SHAPE

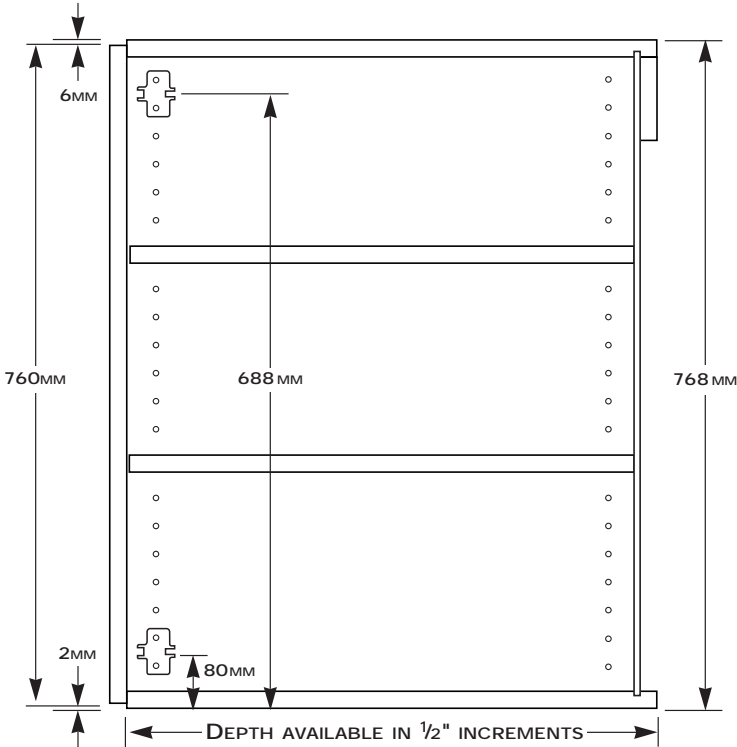
CABINET TYPE: KBL

PRICE CATEGORY: 2

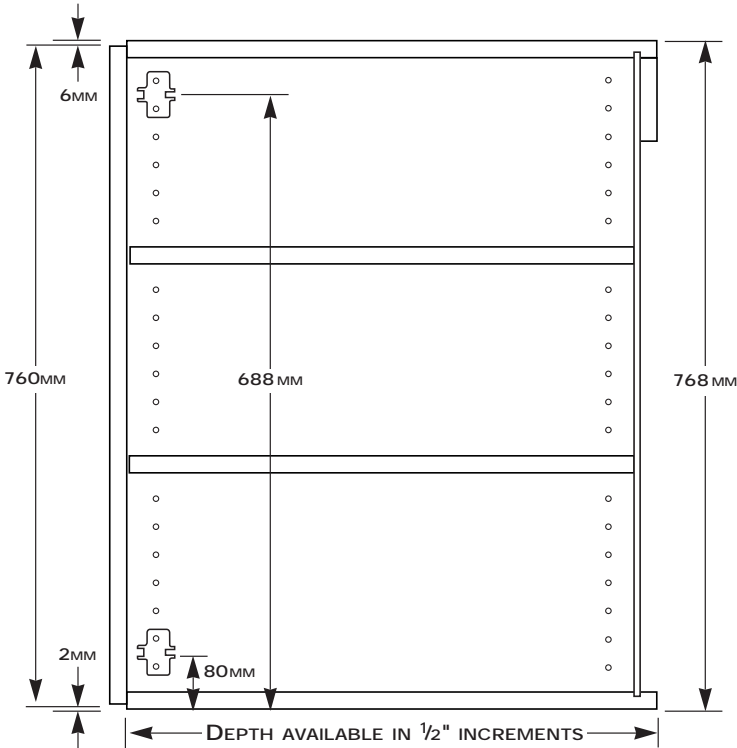


(Technical drawings on reverse)

KITCHEN BASE ANGLE (KBA)



KITCHEN BASE L-SHAPE (KBL)

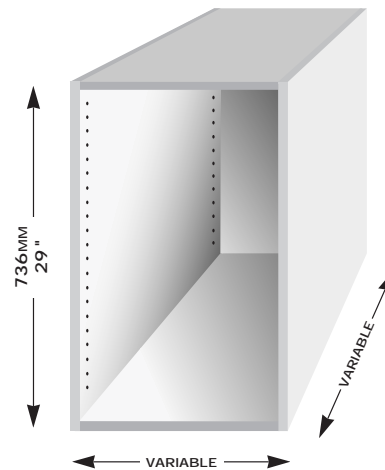


MASTER VANITY DOOR

CABINET TYPE: MVD

OPTIONS: Return panel left or right
1 or 2 pullouts

PRICE CATEGORY: 1



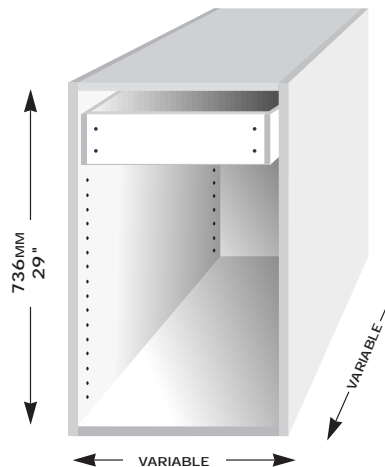
MASTER VANITY DRAWER DOOR

CABINET TYPE: MVDD

OPTIONS: Return panel left or right
1 or 2 top drawers
1 or 2 pullouts

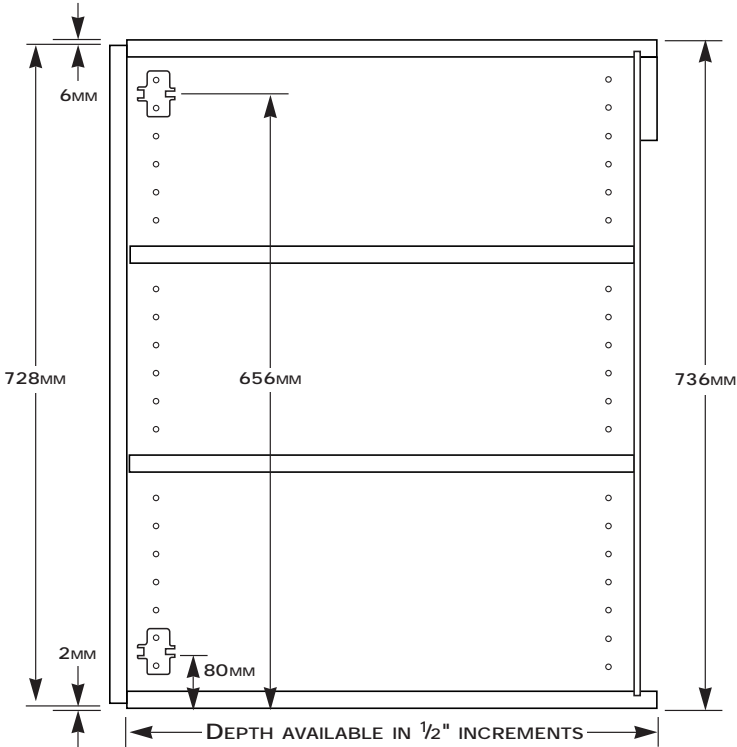
DRAWER HEIGHT: Fixed 152MM (6")

PRICE CATEGORY: 2

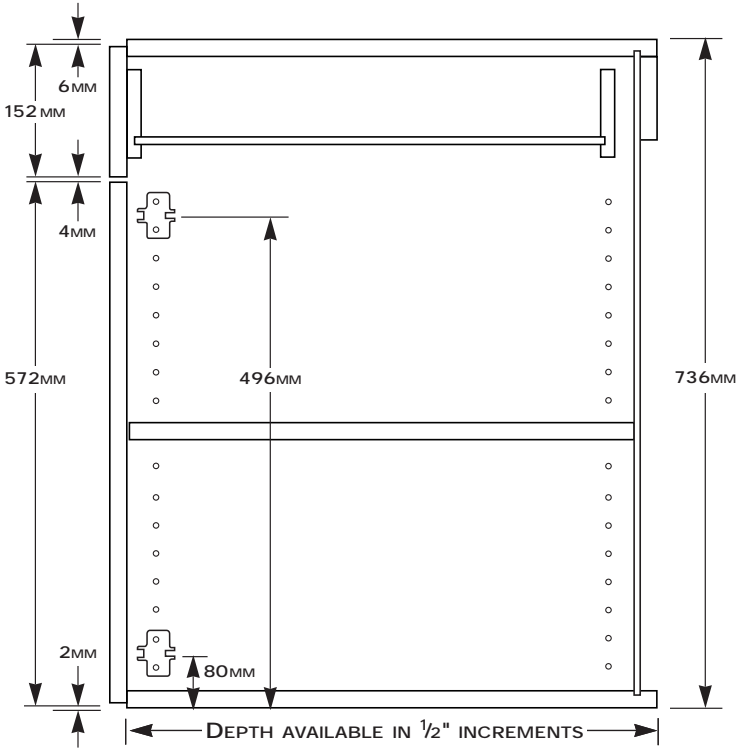


(Technical drawings on reverse)

MASTER VANITY DOOR (MVD)



MASTER VANITY DRAWER DOOR (MVDD)



MASTER VANITY DRAWER BANK

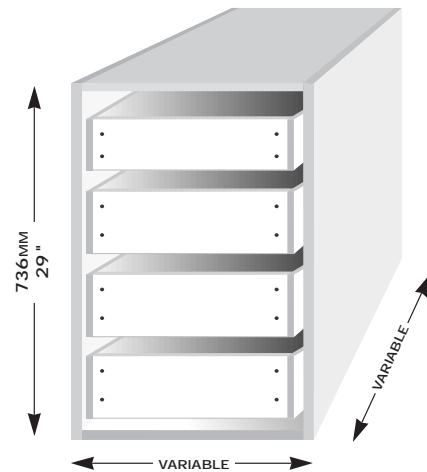
CABINET TYPE: MVDB

OPTIONS: 3 or 4-drawer bank
1 or 2 top drawers
Lower drawers variable height

STANDARD 4-DRAWER BANK:

Top drawer fixed at 152MM (6"),
others at 188MM (7⁷/₁₆")

PRICE CATEGORY: 3

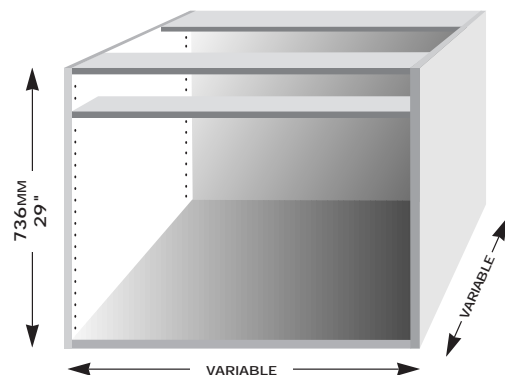


MASTER VANITY SINK/COOKTOP

CABINET TYPE: MVSC

OPTIONS: Return panel left or right

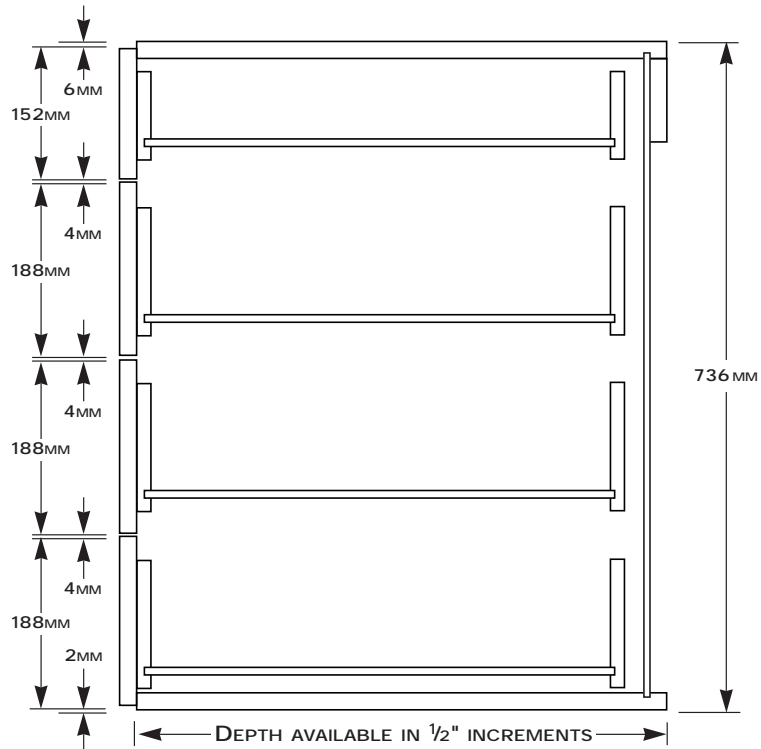
PRICE CATEGORY: 1



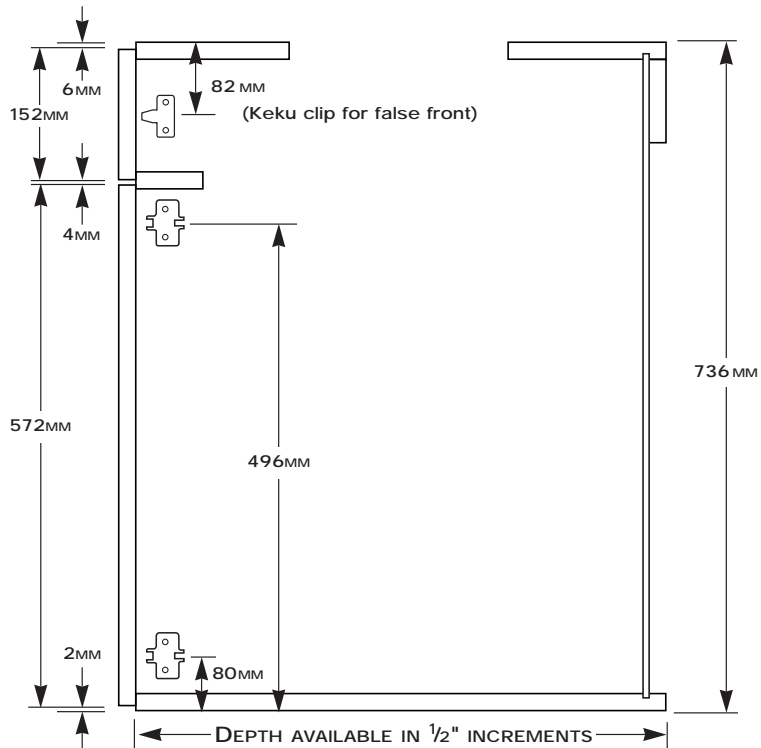
(Technical drawings on reverse)

MASTER VANITY DRAWER BANK (MVDB)

Standard 4-drawer bank shown here. 3-drawer bank also available with variable mid-drawer sizes.



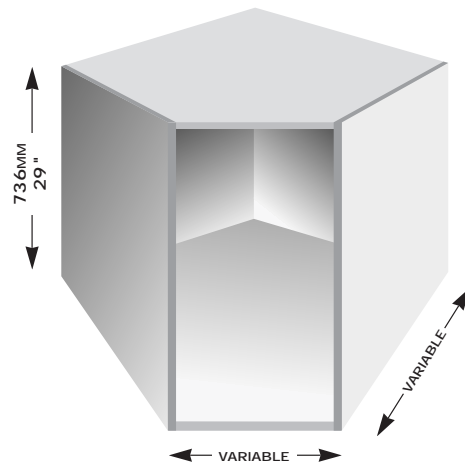
MASTER VANITY SINK/ COOKTOP (MVSC)



MASTER VANITY ANGLE

CABINET TYPE: MVA

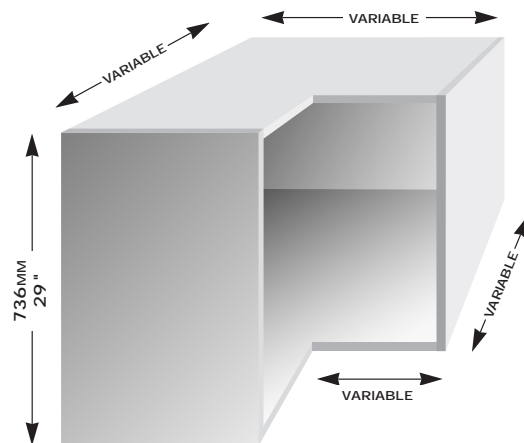
PRICE CATEGORY: 2



MASTER VANITY L-SHAPE

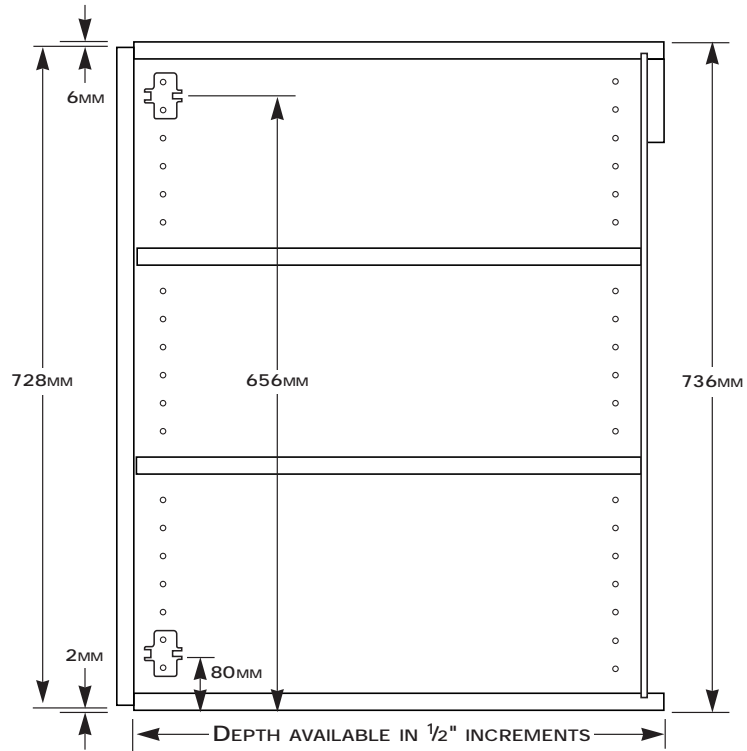
CABINET TYPE: MVL

PRICE CATEGORY: 2

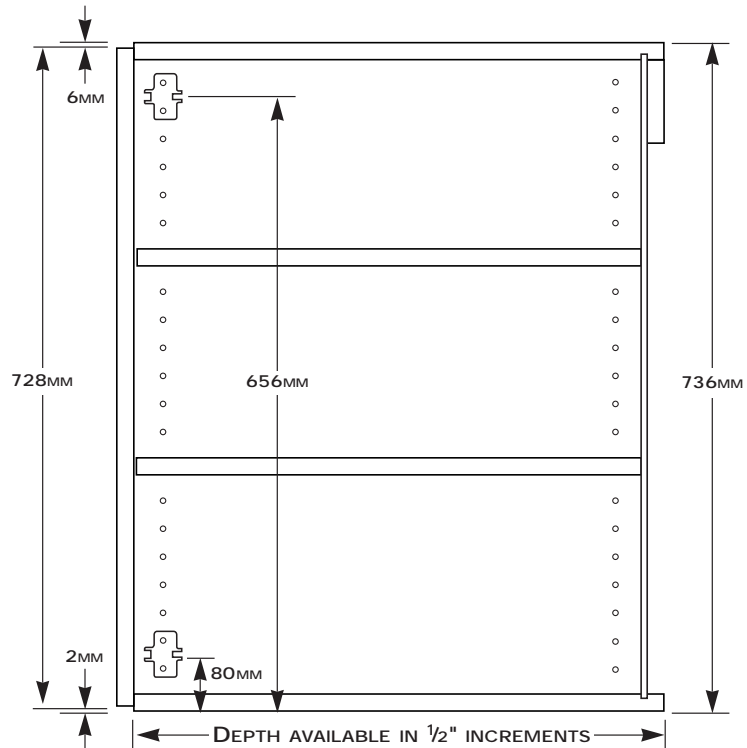


(Technical drawings on reverse)

MASTER VANITY ANGLE (MVA)



MASTER VANITY L-SHAPE (MVL)

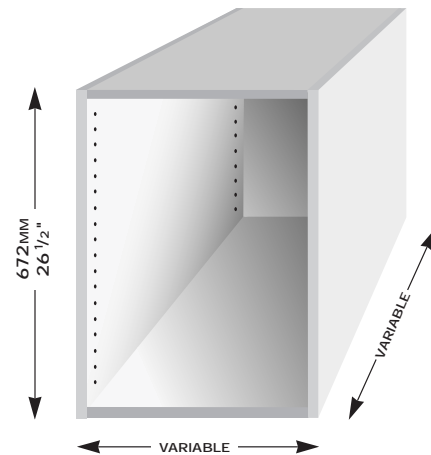


STANDARD VANITY DOOR

CABINET TYPE: SVD

OPTIONS: Return panel left or right
1 or 2 pullouts

PRICE CATEGORY: 1



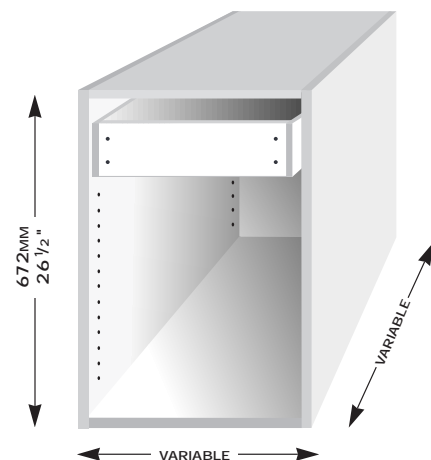
STANDARD VANITY DRAWER DOOR

CABINET TYPE: SVDD

OPTIONS: Return panel left or right
1 or 2 top drawers
1 or 2 pullouts

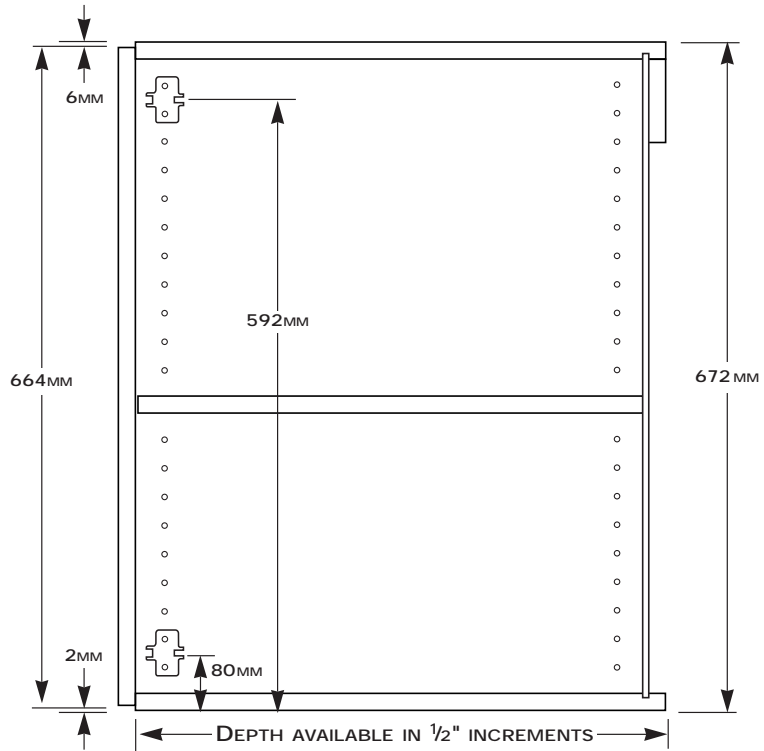
DRAWER HEIGHT: Fixed 152MM (6")

PRICE CATEGORY: 2

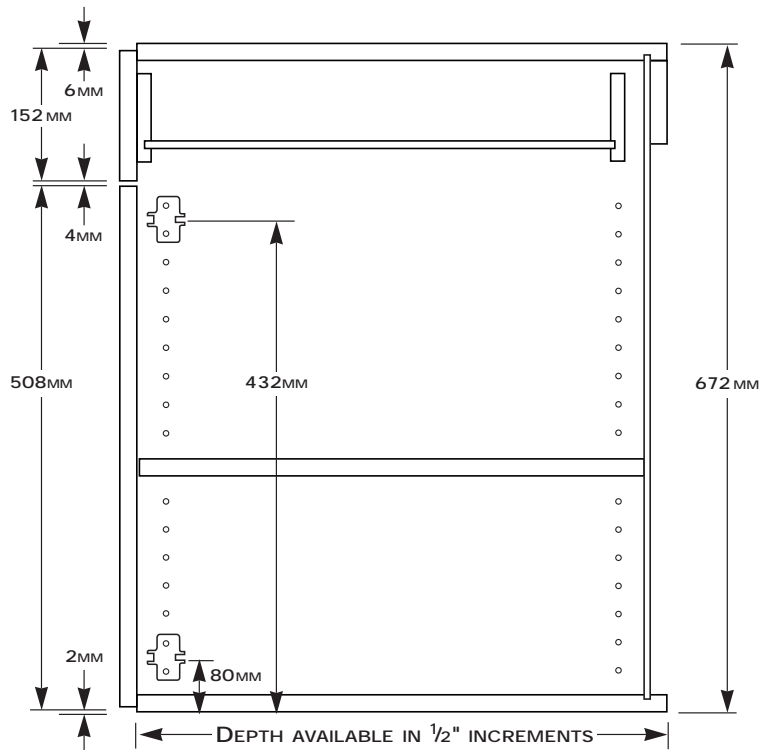


(Technical drawings on reverse)

STANDARD VANITY DOOR (SVD)



STANDARD VANITY DRAWER DOOR (SVDD)



STANDARD VANITY DRAWER BANK

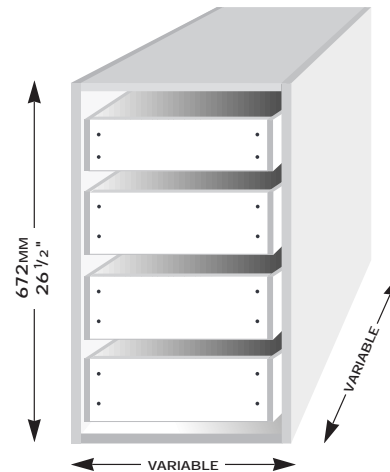
CABINET TYPE: SVDB

OPTIONS: 3 or 4-drawer bank
1 or 2 top drawers
Lower drawers variable height

STANDARD 4-DRAWER BANK:

Top drawer fixed at 152MM (6"),
others at 167MM (6⁹/₁₆")

PRICE CATEGORY: 3

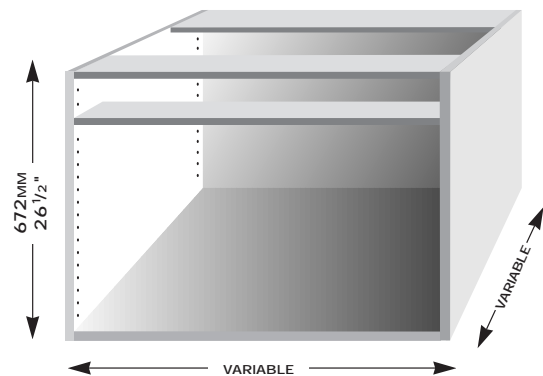


STANDARD VANITY SINK/COOKTOP

CABINET TYPE: SVSC

OPTIONS: Return panel left or right

PRICE CATEGORY: 1

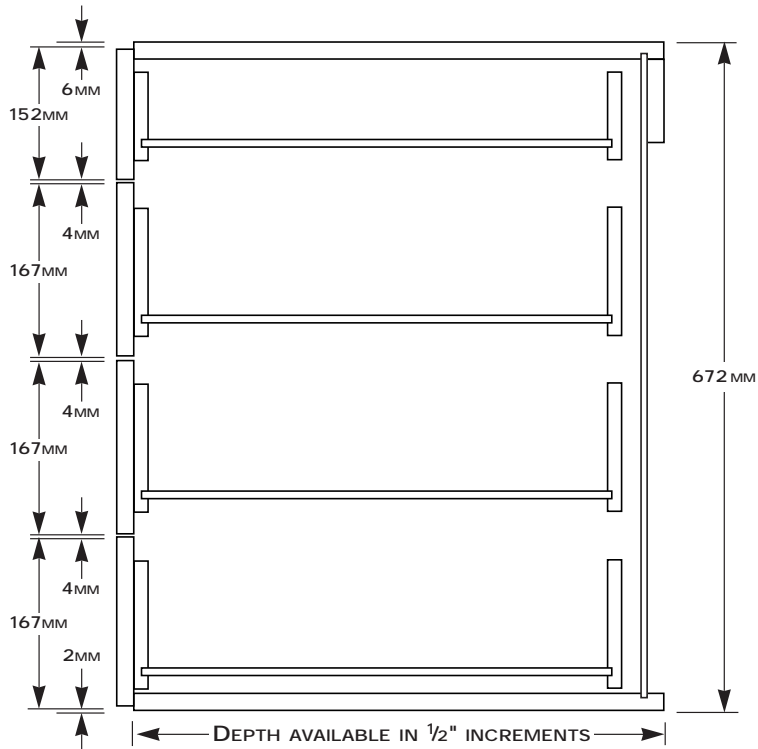


(Technical drawings on reverse)

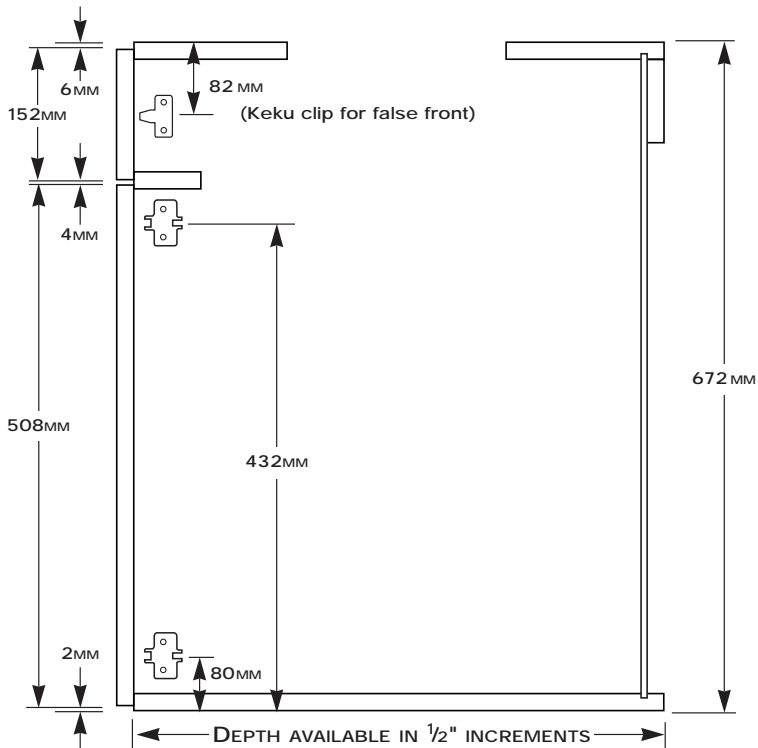
Order from our online catalog: www.its-easi.com

STANDARD VANITY DRAWER BANK (SVDB)

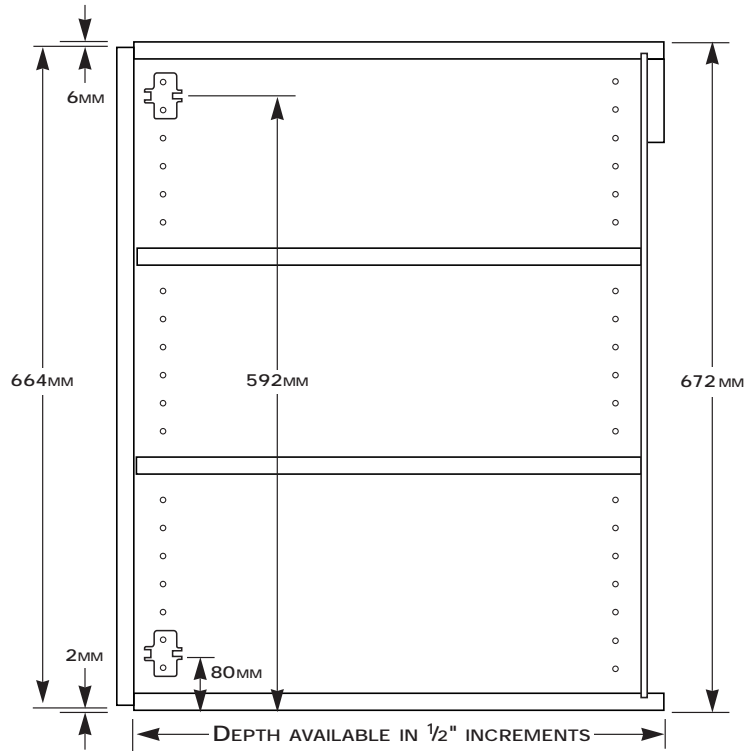
Standard 4-drawer bank shown here. 3-drawer bank also available with variable mid-drawer sizes.



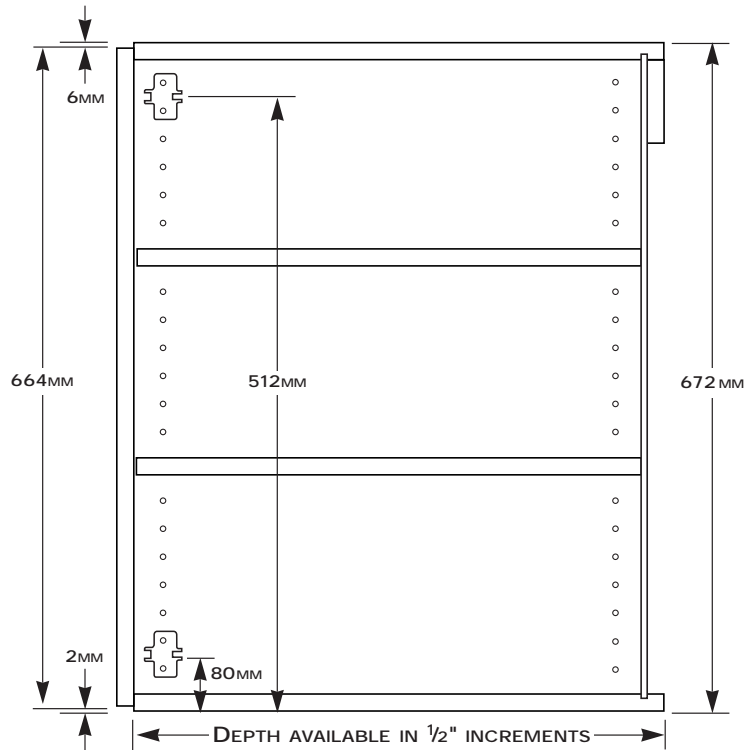
STANDARD VANITY SINK/ COOKTOP (SVSC)



STANDARD VANITY ANGLE (SVA)



STANDARD VANITY L-SHAPE (SVL)

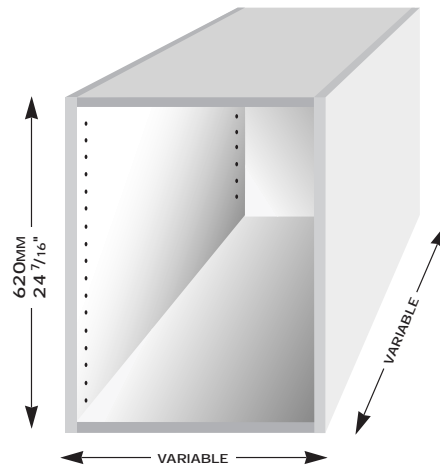


DESK BASE DOOR

CABINET TYPE: DBD

OPTIONS: Return panel left or right
1 or 2 pullouts

PRICE CATEGORY: 1



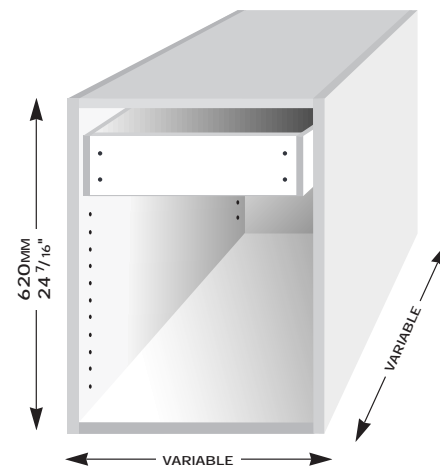
DESK BASE DRAWER DOOR

CABINET TYPE: DBDD

OPTIONS: Return panel left or right
1 or 2 top drawers
1 or 2 pullouts

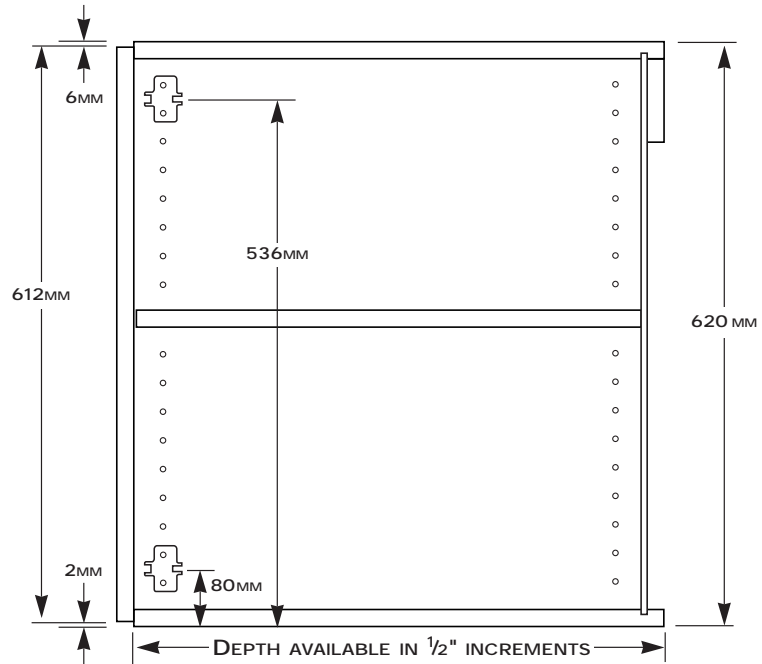
DRAWER HEIGHT: Fixed 150MM (5 7/8")

PRICE CATEGORY: 2

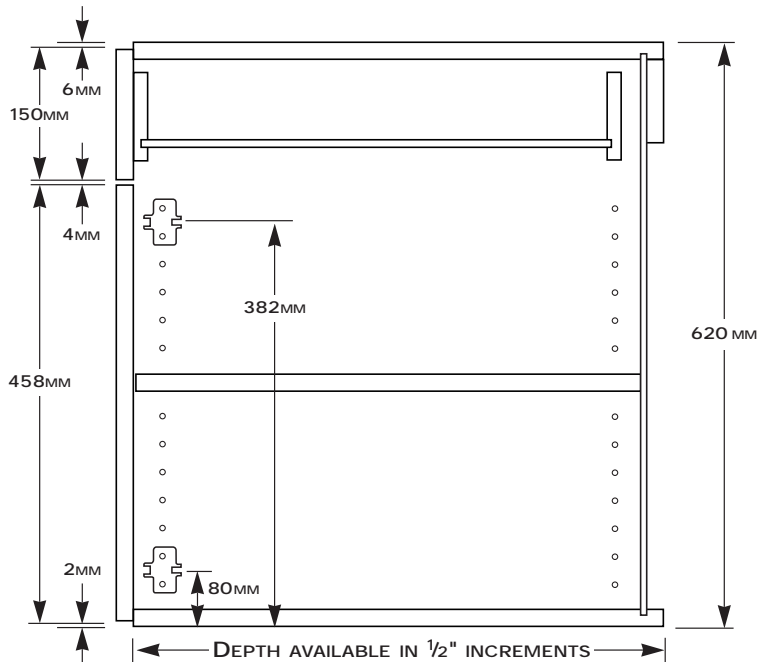


(Technical drawings on reverse)

DESK BASE DOOR (DBD)



DESK BASE DRAWER DOOR (DBDD)



DESK BASE DRAWER BANK

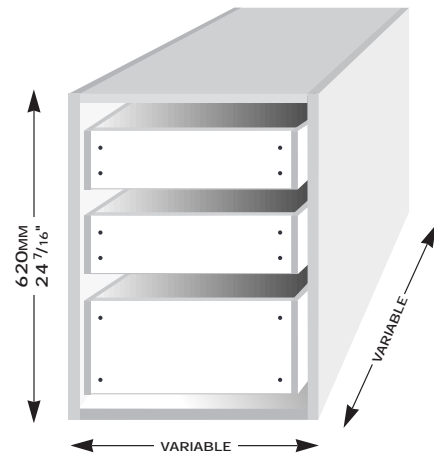
CABINET TYPE: DBDB

OPTIONS: 3 or 4-drawer bank
1 or 2 top drawers
Lower drawers variable height

STANDARD 3-DRAWER BANK:

Top and middle drawer: 150MM (5⁷/₈"),
bottom: 304MM (12")

PRICE CATEGORY: 3

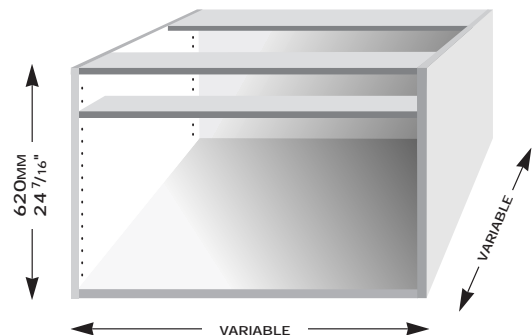


DESK BASE SINK/COOKTOP

CABINET TYPE: DBSC

OPTIONS: Return panel left or right

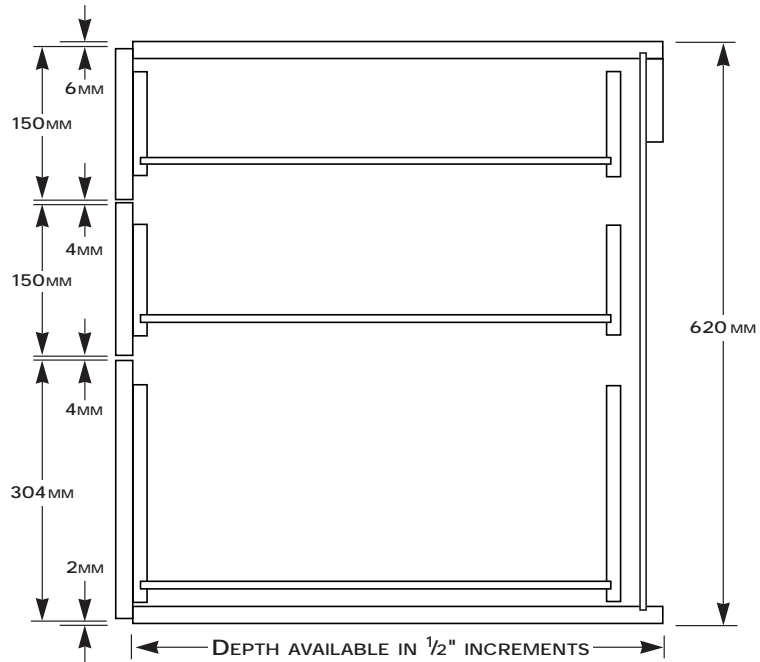
PRICE CATEGORY: 1



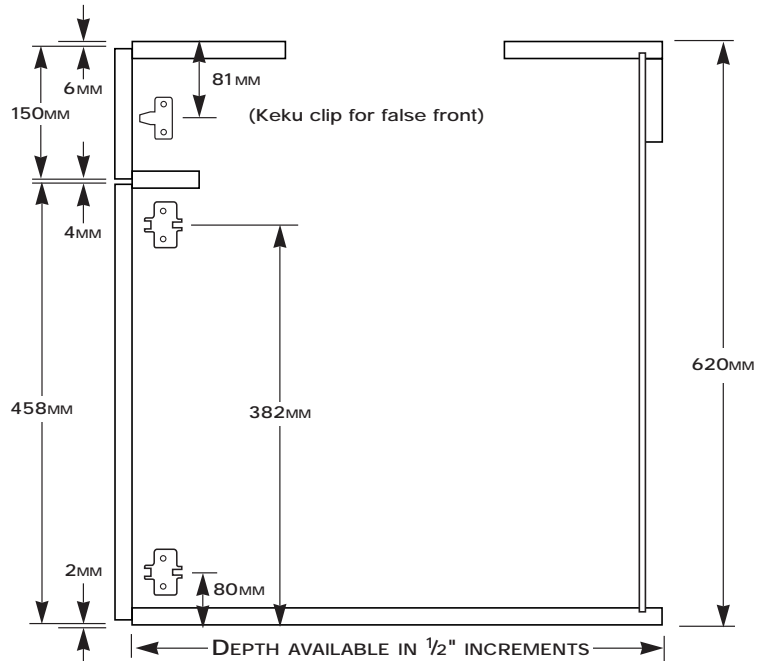
(Technical drawings on reverse)

**DESK
BASE
DRAWER
BANK
(DBDB)**

Standard
3-drawer bank
shown here.
2-drawer
banks also
available
with variable
drawer sizes.



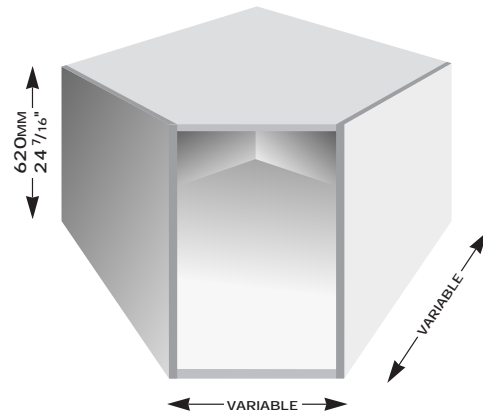
**DESK
BASE
SINK/
COOKTOP
(DBSC)**



DESK BASE ANGLE

CABINET TYPE: DBA

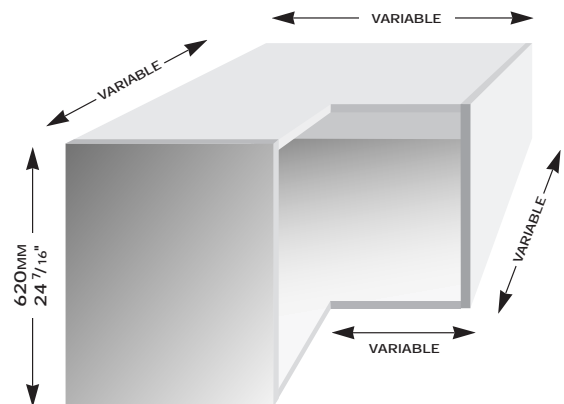
PRICE CATEGORY: 2



DESK BASE L-SHAPE

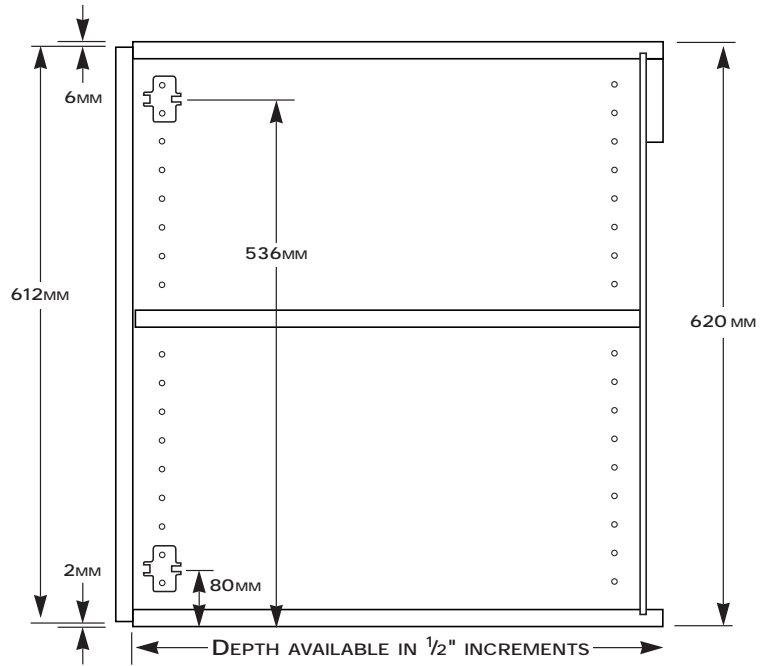
CABINET TYPE: DBL

PRICE CATEGORY: 2

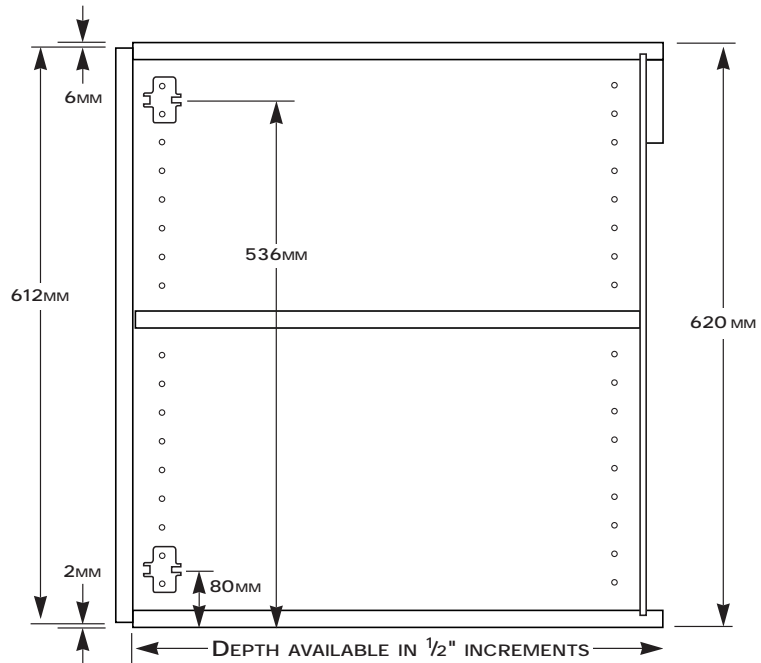


(Technical drawings on reverse)

DESK BASE ANGLE (DBA)



DESK BASE L-SHAPE (DBL)

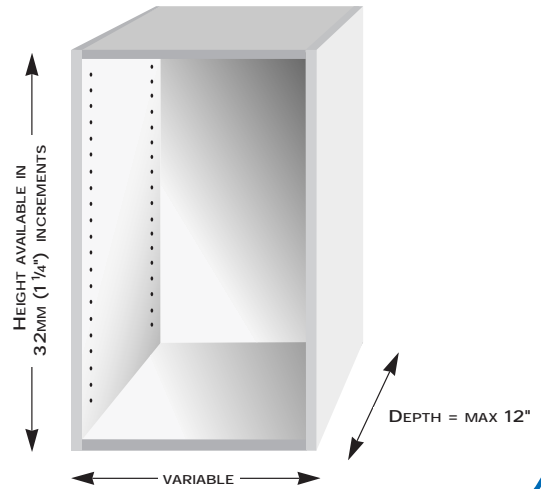


WALL

CABINET TYPE: W

OPTIONS: Return panel left or right
Height available in
32MM (1¼") increments

PRICE CATEGORY: 4

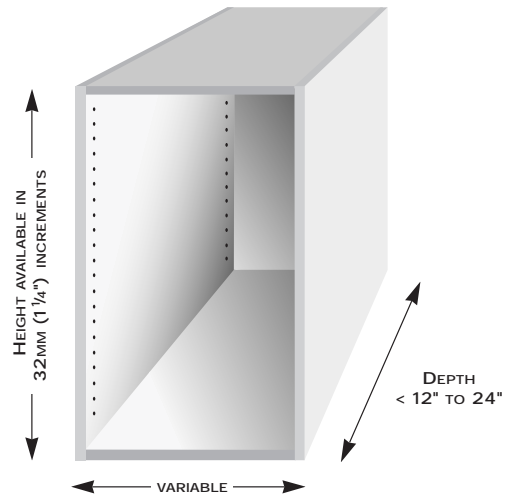


WALL DEEP

CABINET TYPE: WD

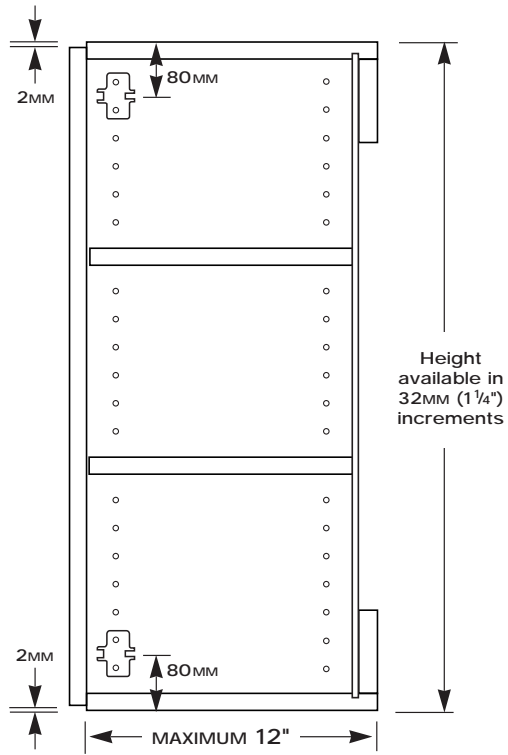
OPTIONS: Return panel left or right
Height available in
32MM (1¼") increments

PRICE CATEGORY: 5

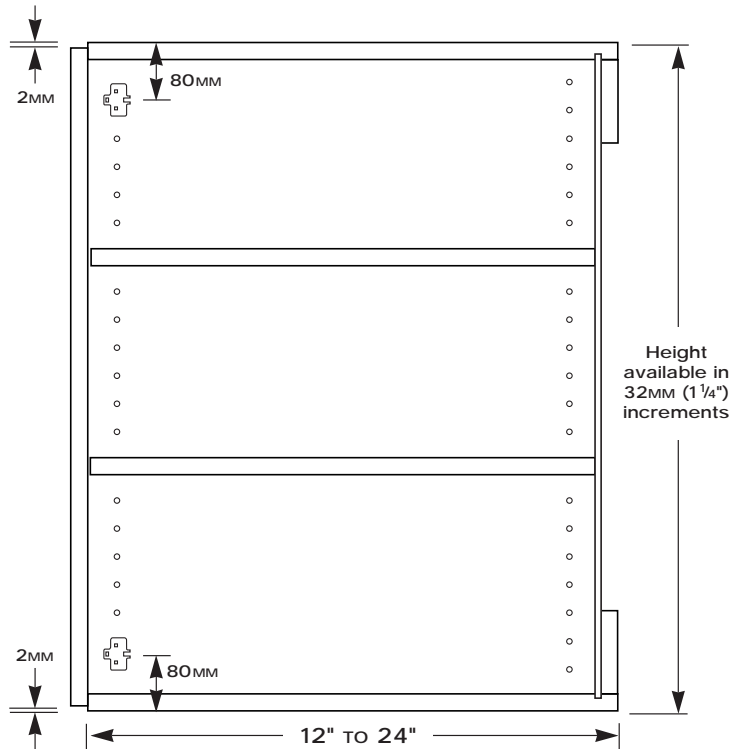


(Technical drawings on reverse)

WALL
(W)



WALL
DEEP
(WD)

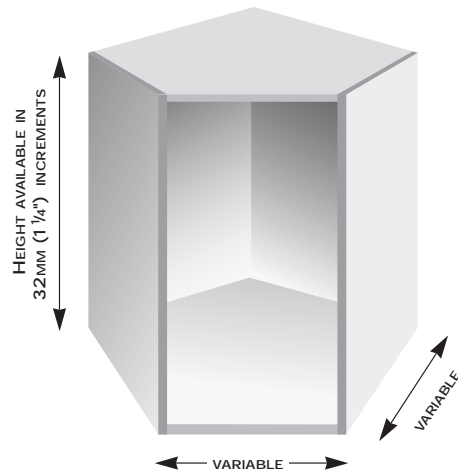


WALL ANGLE

CABINET TYPE: WA

OPTIONS: Height available in
32MM (1¼") increments

PRICE CATEGORY: 5

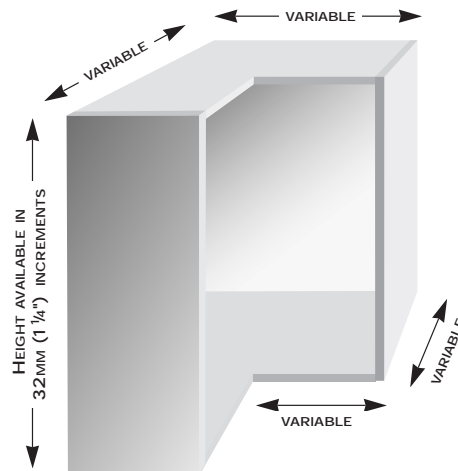


WALL L-SHAPE

CABINET TYPE: WL

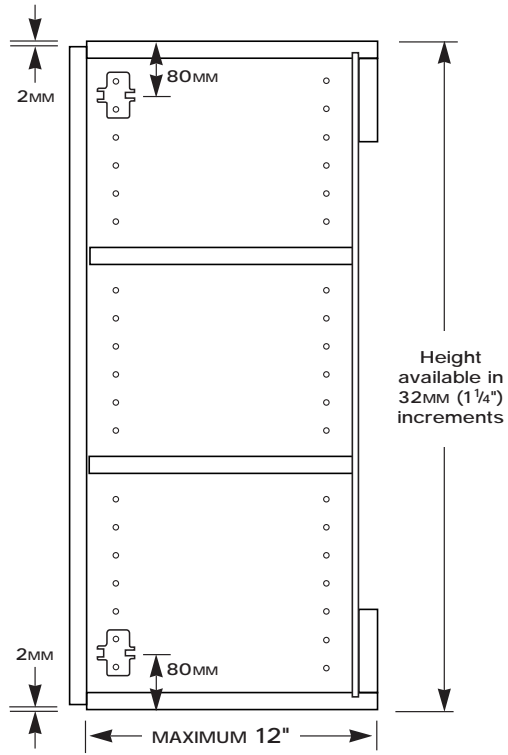
OPTIONS: Height available in
32MM (1¼") increments

PRICE CATEGORY: 5

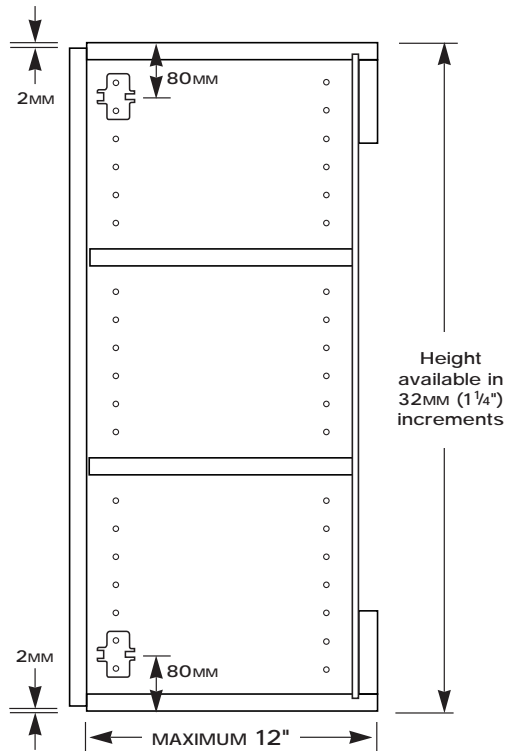


(Technical drawings on reverse)

WALL ANGLE (WA)



WALL L-SHAPE (WL)



PANTRY

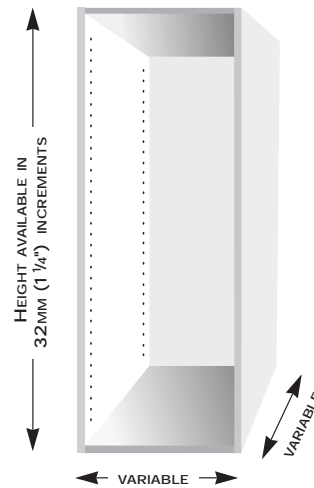
CABINET TYPE: P

OPTIONS: Height available in
32MM (1¹/₄") increments

Horizontal partitions placed at
customer specified locations

Drawers and Pullouts optional

PRICE CATEGORY: 4 (max. 12" deep)
5 (>12" - 24" deep)



OVEN

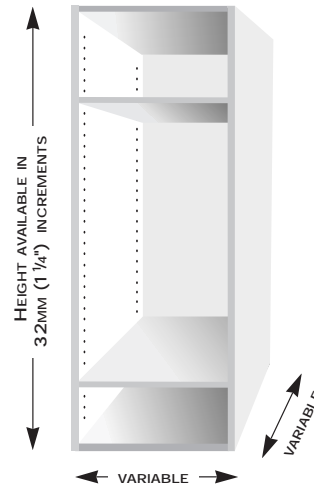
CABINET TYPE: O

OPTIONS: Height available in
32MM (1¹/₄") increments

Horizontal partitions placed at
customer specified locations

Oven Drawers and Pullouts optional

PRICE CATEGORY: 4 (max. 12" deep)
5 (>12" - 24" deep)



(Technical drawings on reverse)

COMPONENT PRICING CHART

PRICE CATEGORY	CABINET TYPE	COST
1	Door, Sink/Cooktop,	\$43.00 per lineal foot
2	Drawer Door, A, L	\$52.00 per lineal foot
3	Drawer Bank	\$85.00 per lineal foot
4	Wall Cabinet	\$11.00 per square foot
5	Wall Deep, Pantry Oven, WL, WA	\$12.00 per square foot

Price List 04-01-08

Packaging & Delivery

Assembled cabinets ready FOB at EASI. Cabinets requiring special packaging or delivery will be estimated at the time of order.

Warranty Information

All parts are guaranteed accurate with 1mm in size and alignment. All items claimed defective must be reported within three days of receipt and returned to our factory prepaid in good condition as originally delivered for inspection before repair or replacement can begin. Our liability under this warranty shall be limited to the net invoice price of the parts as sold by us. Euro Assembly Systems Inc. does not guarantee suitability to an application. Prices and specifications may change without notice. There are no further warranties of any kind, expressed or implied.

SERVICES & HARDWARE

Finished Ends

Wood Veneers.....	\$8.50 sq. ft.
<i>Red Oak, White Oak, Maple, Birch, CVG Fir, Knotty Pine, Cherry, Hickory, and Honduras Mahogany.</i>	
Exotic Veneers also available	call for quote
Standard solid color laminate	\$8.50 sq. ft.

Cabinet Interiors

For partial orders requiring special material or sizing, a 25% upcharge for each applies along with the cost of the material. For complete orders requiring material other than white the cost of the material will apply.

Back Panels

*Wood Veneer back panels up to 48" wide, edge banded four sides
(Wood veneers listed above)
White Melamine back panels up to 96" wide, edge banded four sides*

Assembly

Assembled Cabinet	\$40.00
Assembled Drawer	\$19.00
Assembled Drawer w/Blum 230M	\$25.00
Oven drawer assembled Blum 230M	\$60.00
Pullout assembled with Blum 230M.....	\$60.00

Door and Drawer Faces

*Laminate door & drawer faces
White Melamine door & drawer faces
Rigid Thermal Foil door & drawer faces
Wood door & drawer faces*

Hardware/Misc.

Blum 230M Drawer Guide 10" - 22"	\$6.00
Accuride 3832 or KV 8400 100# Drawer Guide Full Ext. 10" - 22"	\$20.00
Bore Hinge Cup.....	\$2.00
Blum 125 Deg Clip-on Hinge and plate	\$8.50
3/4" x 4" x 8' Melamine toe kick material	\$10.00
Tip-out tray	\$45.00
Lazy Susan	
EASI Product Catalog PDF fileby e-mail only.....	Free
Changes after Order Form Confirmation each.....	\$50.00